

Circle Laser

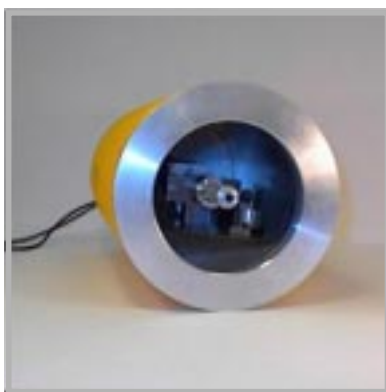
LBD6-635C-230

LBD8-532C-230

Latronix new circle lasers can be used in several types of industries



- *joinery shops*
- *producers of cable drums*
- *sheet-metal shops*
- *foundries*
- *workshops*



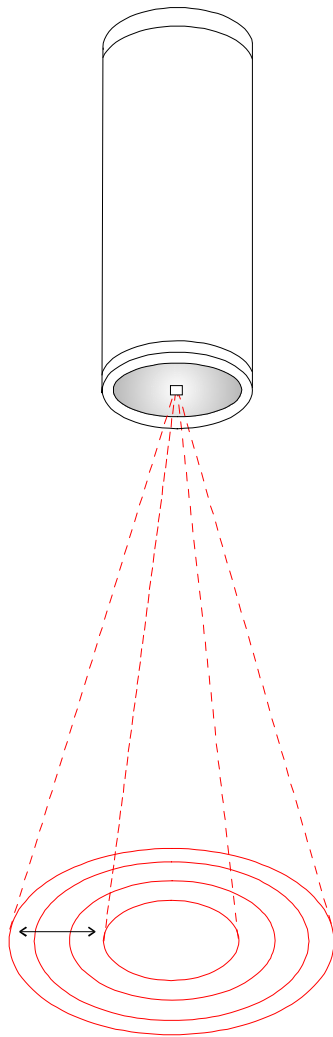
The function of the circle laser

The light beam from a semiconductor laser hits a rapidly rotating, inclined mirror. On a plane perpendicular to the axis of rotation a laser spot is then moving around in a circle and as the spot is moving rapidly the eye interprets it as a circle. The diameter depends on the inclination angle of the rotating mirror. By changing this angle the diameter of the circle can be adjusted to a desired value within certain limits.

The laser beam is either red with the wavelength 635 nm, model LBD6-635C-230 or green with the wavelength 532 nm, model LBD8-532C-230.

The green laser has approximately 6 times better visibility for the human eye than the red one.

Which wavelength is optimal is determined, except by visibility, by the nature of the surface on which the circle is shown. The reflective power of the surface depends on the wavelength of the light i.e. its colour.



Example of application

The diameter of the circle is set on a control unit by a push-button for "increase" and "decrease".

The circle laser is available in a version that also shows the centre of the circle with a cross.

The circle laser has three lifting eye bolts fastened on the rear end surface which can be used to attach the laser to the ceiling above the working area.

The circle laser can also be delivered with an adjustable bracket.

Technical specification

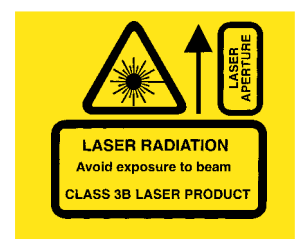
Electrical encapsulation	IP66 for the laser unit
Electrical connection	230 V AC, 50 Hz
CE-mark	EMC-standard Class 4
Ambient temperature	Red laser -10° to +40°C Green laser +10° to +30°C
Typical lifetime at 25°C	30.000 hours for red laser 10.000 hours for green laser
Laser class	3B

Distance m	Max. diameter mm	Min. diameter mm	Linewidth mm
1	1150	350	0,5 - 1
2	2300	700	1
3	3450	1050	1 - 2
4	4600	1400	2 - 3

Laser Safety and Labels - Warning!

The laser can be dangerous if not used properly. Laser safety class is marked on the label placed at the beam aperture of the laser unit.

Read laser safety instructions for your working site carefully before using the unit the first time and be careful not to be exposed to any harmful radiation.



LATRONIX AB

Enhagsvägen 9 Phone: +46 (0)8 446 48 30 e-mail: sales@latronix.se
 SE-187 40 Täby Fax: +46 (0)8 446 48 39 www.latronix.se
 SWEDEN